



Three Generations of  
***Experience,***  
***Commitment***  
 and  
***Knowledge***



- Organics, Concrete & Blacktop Recycling
- Construction Aggregate
- Landscape Supplies & Materials
- Masonry Supplies & Materials
- Concrete & Plastic Products for Drainage & Septic
- Equestrian Projects
- Winter Ice Control Products



## Gravel & Crushed Stone:

**Washed Gravel** – Multi-colored and rounded. 1/4" is commonly used for walkways and garden paths, 3/8" and 3/4" are ideal driveway gravels, and 3/4" and 1 1/4" are widely used for drainage and septic work. *NYSDOT-approved*

**Crushed Bluestone** – Angular, washed, and uniformly bluish-gray in color. 3/8" and 3/4" are popular driveway gravels while 3/4" and 1 1/2" are perfectly suited for drainage and slab preparation. *NYSDOT-approved*

**Local Gravel** – Recycled from natural stone through a crushing and dry screening process. The color varies because it is dependent on the type of rock being crushed. Local gravels have a wide variety of applications depending on the size: base under concrete slab, firm up muddy environments, anti-tracking pads, stabilize steep slopes and drainage work...just to name a few.

**Local Rip Rap** – Angular stone ranging in size from 3"-8". Rip Rap is commonly used to protect soil from erosion by slowing the velocity of concentrated runoff. Rip Rap is also used to construct embankments and to stabilize steep slopes.

## Sand, Stonedust & Sandy Bank Run:

**Dead Sand** – Gray, soft sand primarily used for bedding utility trenches.

**Concrete Sand** – Coarse, dark sand used to mix concrete and, in winter, for ice control.

**Cowboy Sand** – Fine, light- tan-colored sand popularly used in mixing concrete and supplementing beach sand.

**Stonedust** – An extremely versatile material, stonedust is commonly used under pavers, belgium block, cobblestone, and flagstone walkways and patios. Our Local Stonedust has a uniformly beige color and a particle size range up to 1/4". Our Regular Stonedust has a uniformly bluish-gray color and a particle size range up to 1/8".

**Sandy Bank Run** – Most commonly used for filtration areas in septic systems. *NYSDOT-approved*

## Base Materials / Item #4:

**Local Item #4** – An economical item #4, this material consists of fines and local natural stone. The stone size varies up to 1 1/2". Uniformly brownish-gray in color.

**Quarry Item #4** – Consists of white limestone fines and stone. We offer this material in both fine and regular grain. The stone size in fine quarry item #4 ranges in size up to 3/4". In regular grain, the stone size varies up to 1 1/2". *NYSDOT-approved*

**Gray Item #4** – Dark gray in color and consists of fines and stone. The stone size varies up to 3/4". *NYSDOT-approved*

## Recycled Materials:

**Recycled Item #4** – Our most economical item #4, this product is created at our recycling facility through a process of crushing and dry screening concrete, blacktop, brick, rock and other acceptable material. *NYSDOT-approved*

**2"-4" Recycled** – Processed at our recycling facility, this material consists of crushed and dry-screened concrete, blacktop, brick, rock, and other acceptable material.

**1" Recycled** – This material consists primarily of crushed and dry-screened concrete. It can also include some blacktop, brick, rock and other acceptable material. It has no fines and pieces range in size up to 1". This is a versatile product that can be used as an inexpensive alternative to crushed stone and gravel. *NYSDOT-approved*

## Topsoil:

**Medium Screened Topsoil** – Full-bodied field topsoil screened at our materials yard to approximately 1/2". Well suited for growing a wide variety of plants and grasses. *Neutral Ph*

**Fine Screened Topsoil** – Sandy-textured, high quality topsoil screened to approximately 3/8" and popularly used for flower beds and lawns. *Neutral Ph*

**Premium Blend Topsoil** – A blend of our fine-screened topsoil and leaf compost. This blend is perfect for vegetable gardens and as an additive to increase water and nutrient retention of extremely sandy topsoil. *Neutral Ph*

## Fill:

**Fill** – Consists of dirt and some natural rock.

**Local Screenings** – A useful byproduct of our crushed local gravel, this product consists of gravel fines and stone screened to 3/8" (-).

**Structural Screened Fill** - Our select fill screened to 2" (+/-). Structural fill is a screened earthen material used to create a strong and stable base. For example, the native soil at a site may be too weak to support a structure, so the soil is replaced by compacted structural fill to provide the needed structural support. In roadway applications, structural fills are often used as fill for abutments or slabs, backfill for retaining structures, or filling of trenches and other excavations that will support roadways or other structures when completed.

**Subsoil (Dirt Fill)** - A grade below topsoil, our subsoil consists of organic fill screened to 1"(-).

**Impervious Clay Fill** - This product has very high clay content and functions well as a water barrier for septic berms and/or ponds.

## ***Decorative Gravel:***

**Red Gravel** - Offered in 3/8" and 3/4" our red gravel is a decorative, crushed, angular gravel that is reddish-brown in color.

**Cowbay Gravel** - Offered in 5/8" and 3/4", this is a decorative gravel that is rounded and beige to brown in color.

**River Run** - Rounded, naturally semi-polished stone that ranges in size from 2" - 5". River Run has been scooped or dredged from river and creek beds, therefore, it has a wide variety of unique shapes, colors and striations. River Run is used in many landscape design applications including pathways, decorative borders and as accents in flower beds and rock gardens.

## ***Compost & Mulch:***

**Local Screened Compost** - Processed at our materials yard, our local screened compost is finely ground, decomposed mulch from leaves, grass clippings and manure. This compost is perfectly suited for vegetable gardens, and planting flowers and shrubs. *Neutral Ph.*

**Natural Mulch** - We grind our hardwood mulch in-house and stock both double and triple grind. Our mulch has a neutral PH and is dark brown in color, but we also stock non-toxic dyed options: Red, Brown, and Black.

**Sweet Peet Mulch** - Dark-colored and finely ground organic mulch with a neutral PH. Sweet Peet can also be worked into the soil as it decomposes to improve soil quality.

**All-Gro Compost** - A nutrient rich bio-solid ideal for lawns and planting flowers, trees and shrubs.

**Peat Moss** - Excellent additive to soil for any type of planting. Available in 5.5 cubic foot bales.

**Natural Cedar Mulch (Bagged/Palletized)** - Naturally reddish-brown color, shredded, and has a pleasant cedar fragrance. Available in 3 cubic bags or 2.5 cubic yard palletized blocks.

## ***Belgium Block, Cobblestone & Flagstone:***

**Belgium Block** - Granite color, measures approximately 11" x 8" x 4". Available new and used, new Belgium block is also available in pink.

**Cobblestone** - Smaller and more irregularly shaped than Belgium block, available new and used, measures approximately 8" x 6" x 4".

**Flagstone** - Thermal edge, natural color, 1 1/2" thick, sizes vary from 1' x 1' up to 2' x 3' in 6" increments. Treads are 1' deep x 2" thick thermal edge premium bluestone.

## ***Palletized Stone:***

**CT Tan** - Light tan stone, 3"-6" thick with straight edges and corners.

**Karney Wallstone** - A range of dark grays, purples and rust stone, 3"-6" thick with straight edges and corners.

**PA Colonial Wallstone** - Aged, rounded stone in a medium gray to brown color.

**Swingle Stone** - Thin, irregularly shaped stone, similar to bluestone.

## ***Bulk Fieldstone:***

**Random Stone** - Can be hand-picked by the customer, random sizes and colors.

**Stone Resource Wallstone** - Light colored stone ranging in size from 6" to 18".

**NY Fieldstone (Stone Resource)** - Rounded stone typical of local stonewalls.

1

2

3

4

5

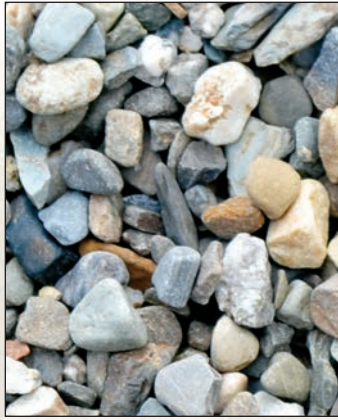
6

7

8



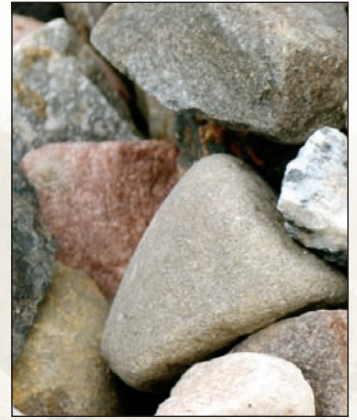
1/4" Washed Gravel



3/8" Washed Gravel



3/4" Washed Gravel



1 1/4" Washed Gravel



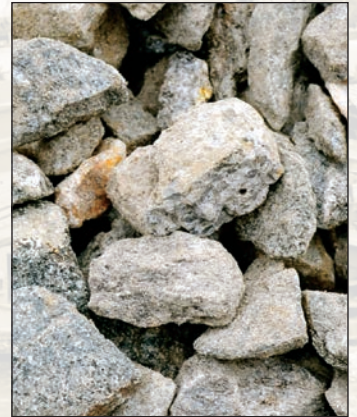
3/8" Crushed Bluestone



3/4" Crushed Bluestone



1 1/2" Crushed Bluestone



3/4" Local Gravel



2" Local Gravel



2 - 4" Recycled



1" Recycled



3/8" Red Gravel



3/4" Red Gravel



3/4" Timberlite

1

2

3

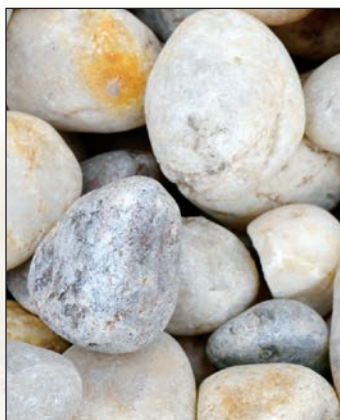
4

5

6

7

8



3/4" Cowboy Gravel



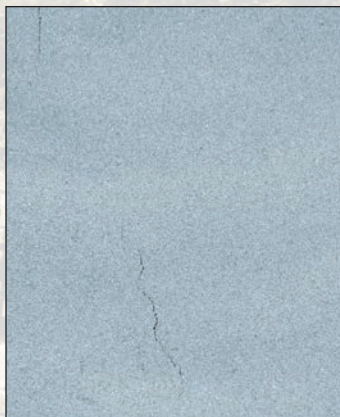
5/8" Cowboy Gravel



2 - 5" River Run (not to scale)



3 - 6 " Local Rip Rap (not to scale)



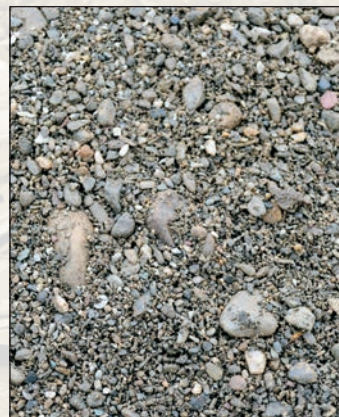
Dead Sand



Concrete Sand



Cowboy Sand



Sandy Bank Run



Local Stonedust



Stonedust



Recycled Item #4



Local Item #4



White Quarry Item #4 (Fine)



White Quarry Item #4 (Reg)



Gray Item #4



Medium Screened Topsoil



Fine Screened Topsoil



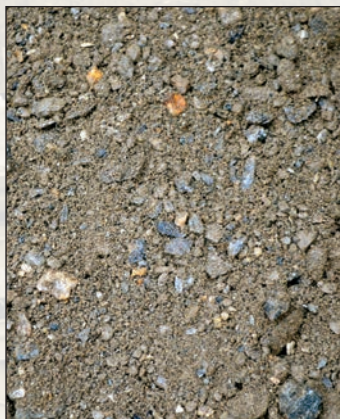
Premium Blend Topsoil



Fill



Local Screenings



Structural Screened Fill



Subsoil (Dirt Fill)



Impervious Clay Fill



Natural Mulch (Double Grind)



Natural Mulch (Triple Grind)



Dyed Brown Mulch



Dyed Black Mulch



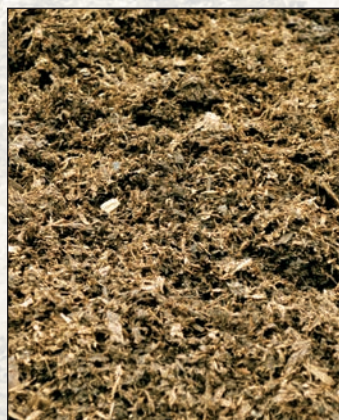
Dyed Red Mulch



Local Screened Compost



"AllGro" Compost



"Sweet Peet"



New Belgium Block (Gray)



New Belgium Block (Pink)



Used Belgium Block



New Cobblestone



Used Cobblestone



Flagstone



CT Tan Wall Stone



Karney Wallstone



PA Colonial Wallstone



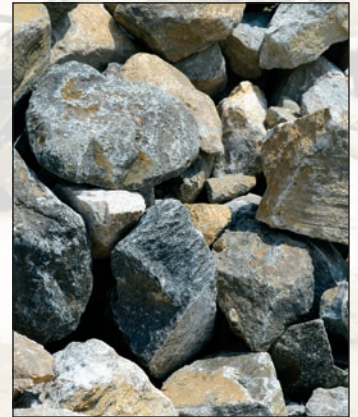
Swingle Stone



Random Stone



NY Fieldstone (Stone Resource)



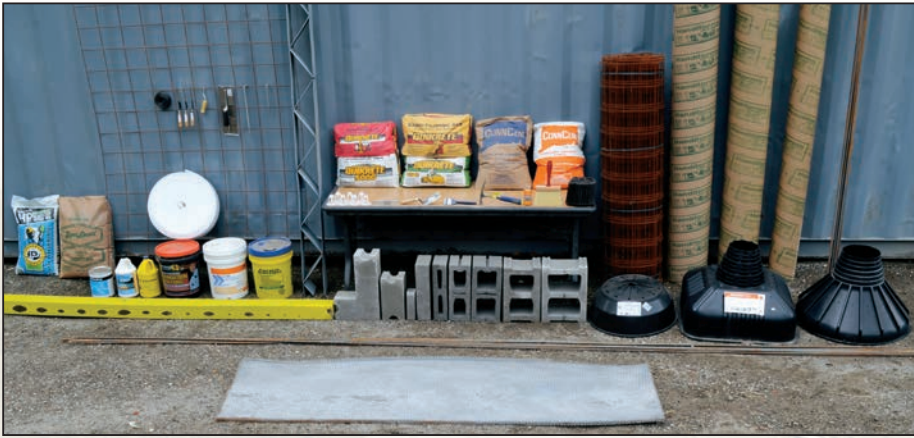
Local Fieldstone



Boulders



Plastic Products



Masonry Supplies



Landscaping and Drainage Supplies



Pipe, Fittings, Etc.



Concrete Products



Miscellaneous Supplies



**Lawton Adams  
Materials Supplies & Recycling**

260 Route 100  
Somers, New York 10589

914-232-3275 | [lawtonadams.com](http://lawtonadams.com)

Contact Jesse Sarnoff for sales  
information at extension 5 and  
[jesse@lawtonadams.com](mailto:jesse@lawtonadams.com)